

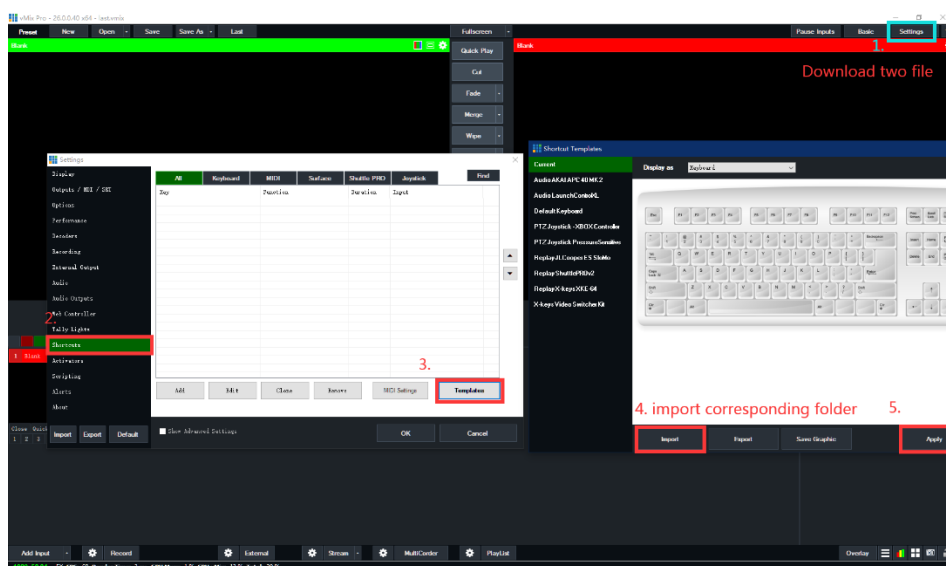
How to add a controller template

1. Step 1:

After extracting the folder, move the “VMIXCONTROLLER” and “VMIXCONTROLLERLED” folders to a convenient or familiar directory, or remember the path where the files were extracted.

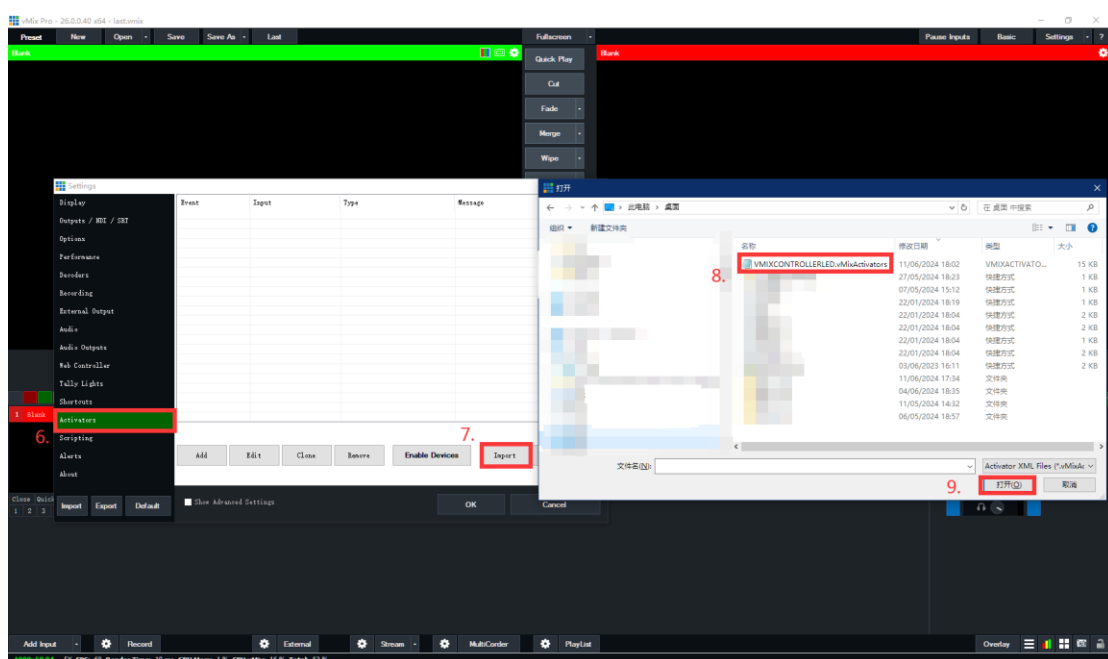
2. Step 2:

Open the Vmix software, and once it's opened, click on "SETTING" in the upper right corner of the software. In the settings menu, find the "Shortcuts" option. First, click on the "MIDI Setting" button at the bottom of the Shortcuts page, which will open a device list showing all connected MIDI devices. Check the device named "KEYBOARD" and click confirm, then click the "Templates" button in the lower right corner of the page.



3. Step 3:

After clicking the "Templates" button, the Shortcut Templates page will open. At the bottom of the page, click the "Import" button to import the "VMIXCONTROLLER" file as the key template. This file can be found in the unzipped folder, either in the directory where the manual is located or in the last folder you moved. Although it has a similar name to "VMIXCONTROLLERLED," they will not appear simultaneously in the addition list. Please confirm that you have selected the correct file and click the confirmation button to complete the addition. After adding, return to the Shortcut Templates page and click the "Apply" button in the lower right corner to finalize the shortcut key settings.



4. Step 4: Click on the Activators menu under the Settings list, and at the bottom of the page, click the “Enable Device” button, which is similar to the previous “MIDI Setting” button. Check the device named “KEYBOARD” and click confirm. After that, click the “Import” button to execute the template file import, following similar steps as importing the shortcut file.
5. Finally: After the addition is complete, you can use it normally. Enjoy your experience.